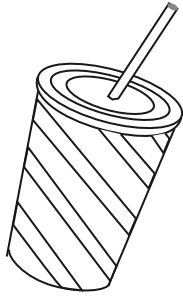


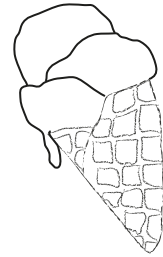


Summer

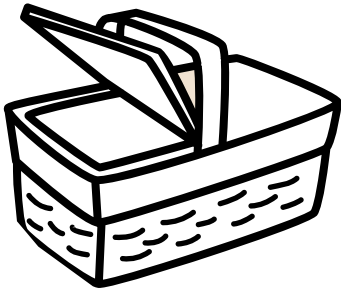
There are some pictures of things that belong to summer. Colour them and write what they are on the lines, please.



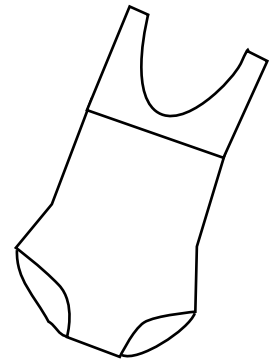
1.



2.



3.



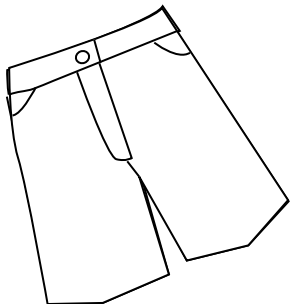
4.



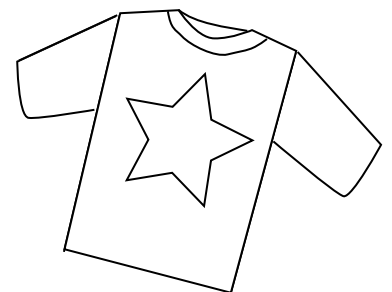
5.



6.



7.



8.

Linking letters

Solve the crossword below please. Each picture is a clue and each word starts with the last letter in the previous word, except the last word in the crossword that ends with the same letter as the previous one.

The crossword puzzle consists of the following grid structure:

- 1.** A horizontal row of 5 empty boxes.
- 2.** A vertical column of 7 empty boxes, starting from the 5th box of row 1.
- 3.** A horizontal row of 6 empty boxes, starting from the 2nd box of row 2.
- 4.** A vertical column of 3 empty boxes, starting from the 6th box of row 3.
- 5.** A horizontal row of 4 empty boxes, starting from the 2nd box of row 4.
- 6.** A vertical column of 3 empty boxes, starting from the 4th box of row 5.
- 7.** A horizontal row of 10 empty boxes, starting from the 2nd box of row 6.

Clues and illustrations:

- 1.** Apple (Illustration: A green apple with a leaf)
- 2.** Elephant (Illustration: A line drawing of an elephant)
- 3.** Tomato (Illustration: A red tomato)
- 4.** Owl (Illustration: A line drawing of an owl)
- 5.** Lion (Illustration: A line drawing of a lion)
- 6.** Needle (Illustration: A hand-drawn needle)
- 7.** Pineapple (Illustration: A colorful pineapple)